

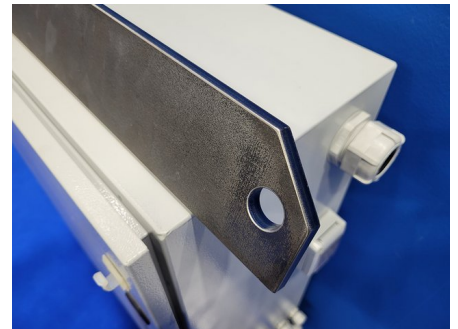
## Deburring and edgerounding machine G 135 RB8

Model	G 135 RB8
Brand	<u>GECAM</u>
Condition	new
Working width	1350
Origin	Italy

⌚ approx. 12 weeks from order

**€ 145.200,00**

Leasing\*: € 2.889,48



## General characteristics

Working width	1350
Sheet thickness range - mild steel	0,4 - 120 mm
Grinding belt dimensions	1370 x 2200 mm
Suction capacity	6000 m³/h
Connection for dust collector diam.	150 mm
Air connection	6 bar

## Dimensions and weight

Length	4200 mm
Width	2300 mm
Height	2350 mm
Weight	4200 kg

## Description

**with 2 Working Stations: 1 x Grinding belt und 1 x Brush unit on top**

- Machine made of stress-free welded steel construction for stable and rigid structure
- Work table with motorised height adjustment via 4 synchronised spindles.
- Independent drive motors for each work group.
- Hoods for extraction inside the machine, one per station.

Touch screen for:

- Automatic star-delta connection of the main motors
- Digital display for sheet thickness with decimal point tolerance
- Material thickness adjustment (+/- 0.1 mm)
- Machine condition monitoring with alarm messages

### FEEDING SYSTEM

- Robust steel structure, wear-resistant surface.
- Vacuum conveyor belt on request
- The table raises and lowers from 780 mm to a maximum height of 950 mm above the floor. The power of the motor for height adjustment of the table is 0.25 kW.
- Maximum permissible weight on the table: 140 kg.
- Variable feed speed via frequency converter 0,4 to 4,5 m/min, Option 0,2 to 2,0 m/min or 0,6 bis 6,0 m/min.
- Rubber conveyor belt, oil and temperature resistant.
- Lateral guides to prevent the belt from lifting off.
- Rubber pressure rollers in front and behind each station, oil and temperature resistant.
- Automatic centring device for the conveyor belt
- Automatic servo cooled motor
- Speed motor on the main touch screen

### 1 th R GROUP DEBURRING WITH ABRASIVE BELT

- Rectified and balanced contact roller with 180 mm diameter. Coating of oil and heat resistant nitrile rubber. Standard roller hardness 55° shores. Mounted on an eccentric shaft that allows to control the working position and compensate the abrasive belt wear, with a range of 8 mm. This system is controlled by a pneumatic cylinder that allows the automatic insertion of the group into the work and, in case of emergency and/or machine stop, the immediate removal of the sanding belt from the working point. It is possible to insert sanding belts and/or Scotch Brite.
- Pneumatic on-off switch.
- Roller adjustment up-down "grain" stroke 10 mm
- Variable speed motor 11 kW with automatic braking in case of emergency.
- Rotation speed in feed direction 4 - 18 m/s.
- Width and duration of the oscillation setting.
- Pneumatic tensioning system for the abrasive belt.
- Sanding belt centring system, with electronic photocell, Oscillation adjustment in width and time.

## **2nd GROUP ROTATING BRUSH UNIT**

- 2 rows of vertical brushes, 4 rotating clockwise and 4 counterclockwise.
- Each brush has a diameter of 350 mm and a length of 530 mm.
- Motorised raising and lowering of the group to regulate the pressure of the deburring.
- Variable speed motor 1,5 kW.
- Variable speed group electronic inverter 6 - 12 U/min.
- Brush motor with variable speed, power 6 kW (4 x 1,5 kW). From 300 to 900 U/min.
- Speed programmable control and display on the electronic touch screen.

## **CONTROL OF THE THICKNESS AND THE BRUSHES**

- Motorised table lifting with fine adjustment via 4 precision screws with ball bearings
- Maximum operating pressure 120 mm
- Pressure motor power kW 0,75
- Pressure adjustment via touchscreen

## **CONVEYOR BELT CLEANING**

Brush system in nylon canvas for cleaning the conveyor belt (length 1350, Ø =150 mm), located at the back of the machine under the table, with a motor power of 0.12 kW. The brush rotates against the rotation of the conveyor belt and removes the dust remaining on the belt and in the holes of the vacuum system. It is very important to keep the holes clean to maintain the maximum capacity of the vacuum.

## **VACUUM SYSTEM**

- Perforated and slotted conveyor belt and table
- Vacuum fan motor inside the machine, Power 4,0 kW
- Automatic start of the time lapse
- Double inlet pipework (left and right) of the table
- Sound insulation system for vacuum blowers through special low-noise material and silencers

## **ELECTRONIC CONTROL**

- Electronic Control PLC-Touchscreen 10"
- Automatic start of the sequence programme

- Control of layer thickness
- Software-Help
- Feed control
- Speed monitoring
- Automatic alarm notification and reset

**The machine must be used with an extraction device. We recommend an extraction system with 6,000 m³/h.**

**Option:**

Service-Remote-Device    € 1.600,--

## Further information

### Product video

- [Entgrat- und Kantenverrundungsmaschine GECAM G 135 RB8](#)

## Notice

Prices ex location, excluding VAT.

The [General Terms and Conditions of Delivery](#) of the Austrian Association of the Machine and Steel Construction Industry apply.

We only sell under retention of title, the goods remain our unrestricted property until they have been paid for in full.

Price changes and errors excepted.

\* Monthly net leasing rate, leasing period 60 months, no down payment, 5% residual value, subject to a positive credit check. The leasing conditions of [GRENKELEASING GmbH](#) apply. Valid for lessees based in Austria.